

**Paper Reference(s)    1BI0/2F**  
**Pearson Edexcel Level 1/Level 2 GCSE (9–1)**

**Biology**  
**PAPER 2**  
**Foundation Tier**

**Friday 7 June 2024 – Afternoon**

**Time: 1 hour 45 minutes**

**Diagram Booklet**

**THIS DIAGRAM BOOKLET MUST BE  
RETURNED WITH THE QUESTION PAPER  
AT THE END OF THE EXAMINATION.**

**In the boxes below, write your name, centre  
number and candidate number.**

<b>Surname</b>					
<b>Other names</b>					
<b>Centre Number</b>					
<b>Candidate Number</b>					

# **INSTRUCTIONS**

**There may be spare copies of some diagrams in case you need them.**

# **CONTENTS**

## **Page**

<b>4</b>	<b>Question 1</b>
<b>5</b>	<b>Question 1(a)</b>
<b>6</b>	<b>Question 1(b)</b>
<b>7</b>	<b>Question 2(c)(i)</b>
<b>8</b>	<b>Question 3</b>
<b>9</b>	<b>Question 3(b)</b>
<b>10</b>	<b>Question 4(a)</b>
<b>11</b>	<b>Question 4(d)</b>
<b>12</b>	<b>Question 5</b>
<b>13</b>	<b>Question 5(b)</b>
<b>14</b>	<b>Question 6</b>

**(continued on the next page)**

## **CONTENTS continued.**

**15 Question 6(d)**

**16 Question 7**

**17 Question 8(b)**

**18 Question 9(a)**

**19 Question 9(b)**

**20 Question 9(c)**

**21 Question 10(b)**

**22 Question 10(e)**

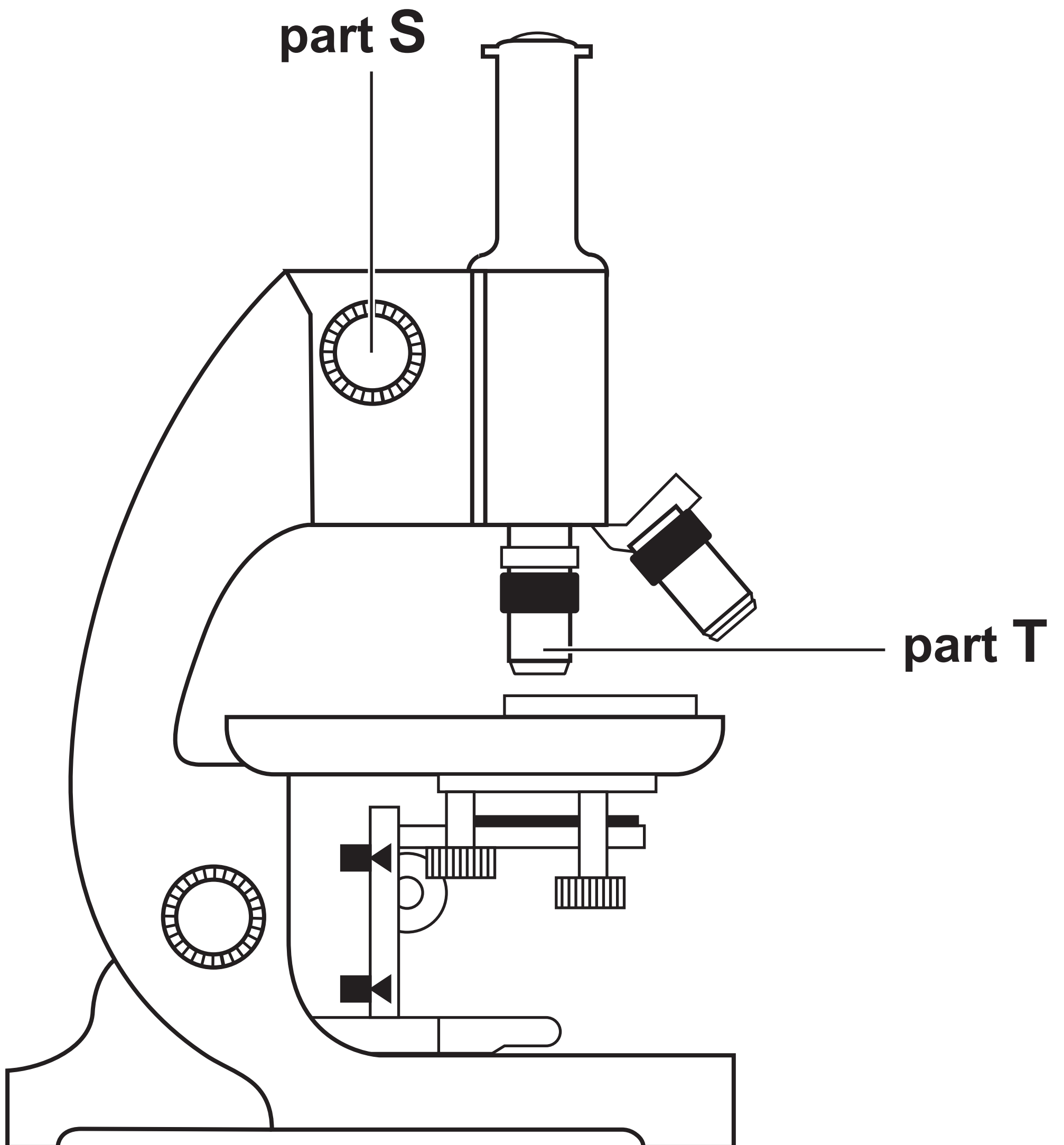
### **Spare Copies**

**23 Question 1(a)**

**24 Question 4(a)**

# Question 1

# FIGURE 1



## Question 1(a)

**part of  
microscope**

**function**

**part S**

- **to stain the cells**

- **to focus the image  
so that it is clear**

- **to magnify  
the image**

**part T**

- **to hold the slide  
in place**

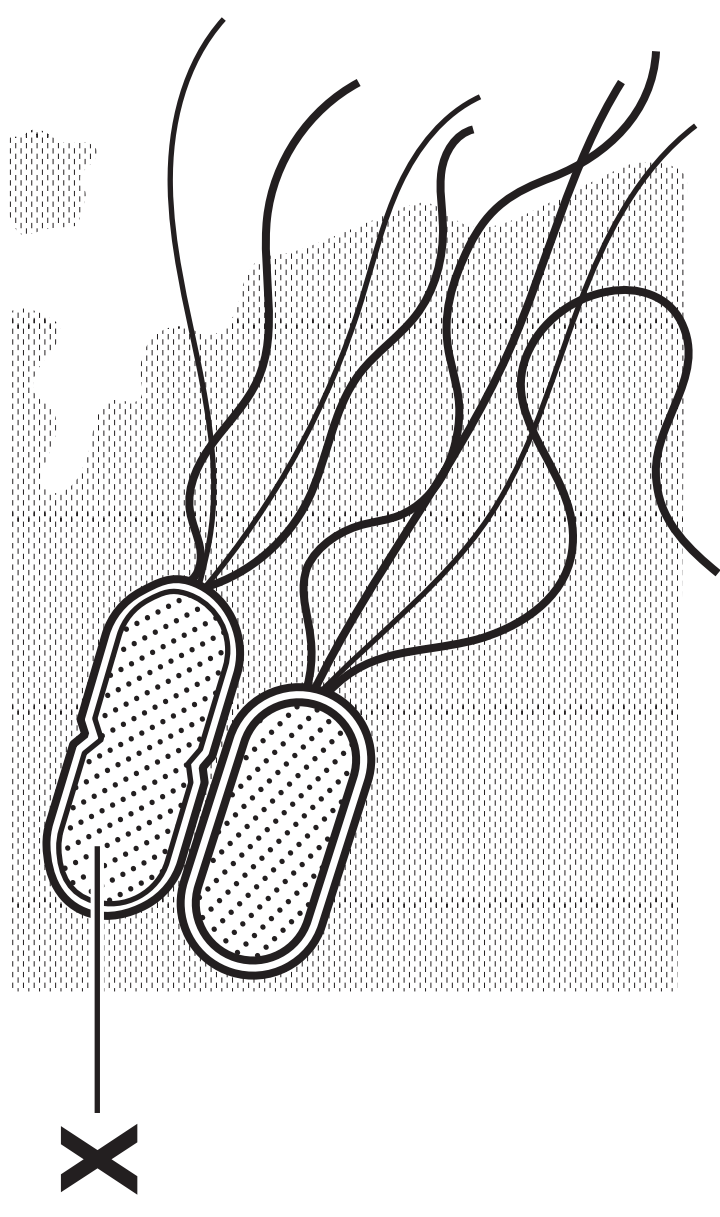
- **to provide light to  
see the image**

**FIGURE 2**

**image A**



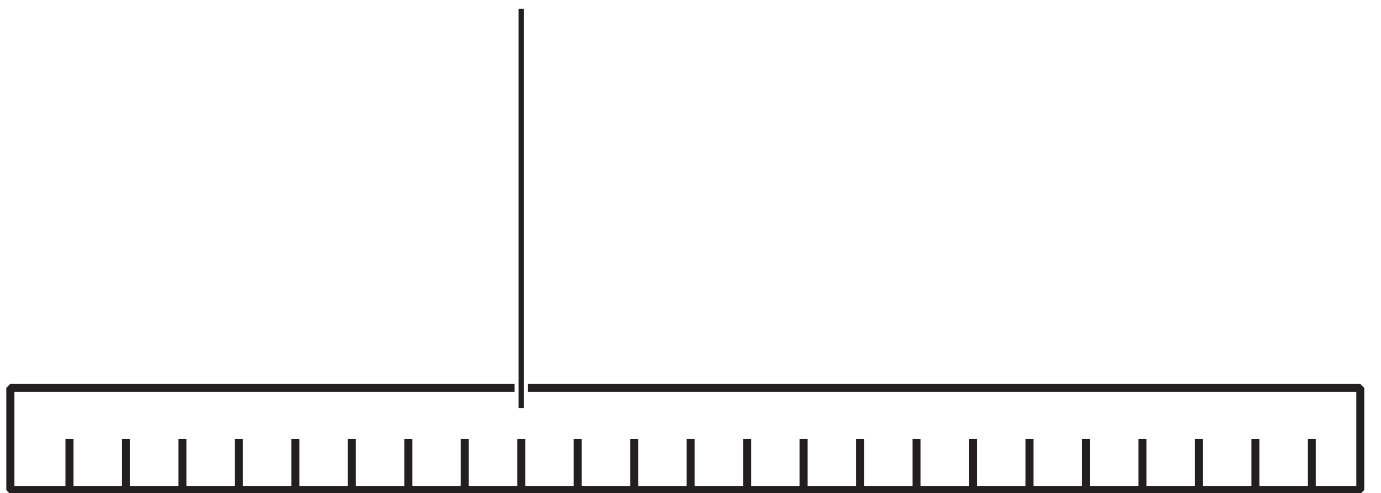
**image B**



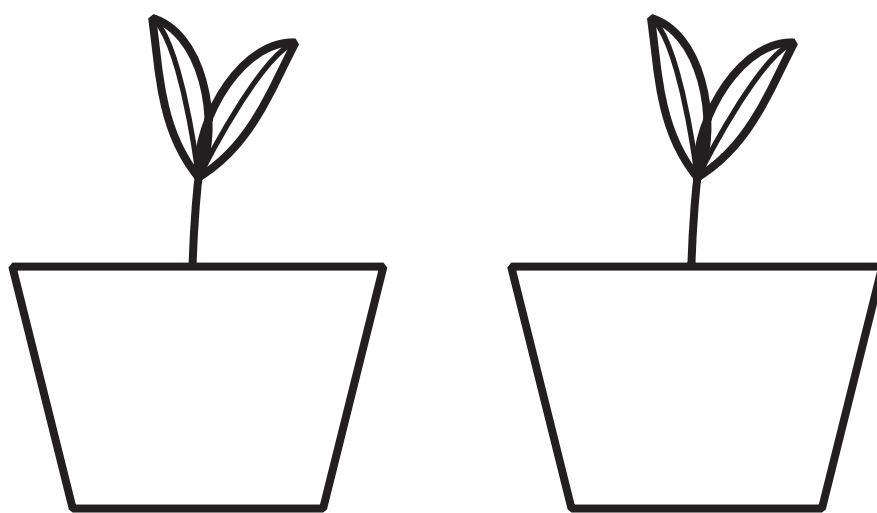
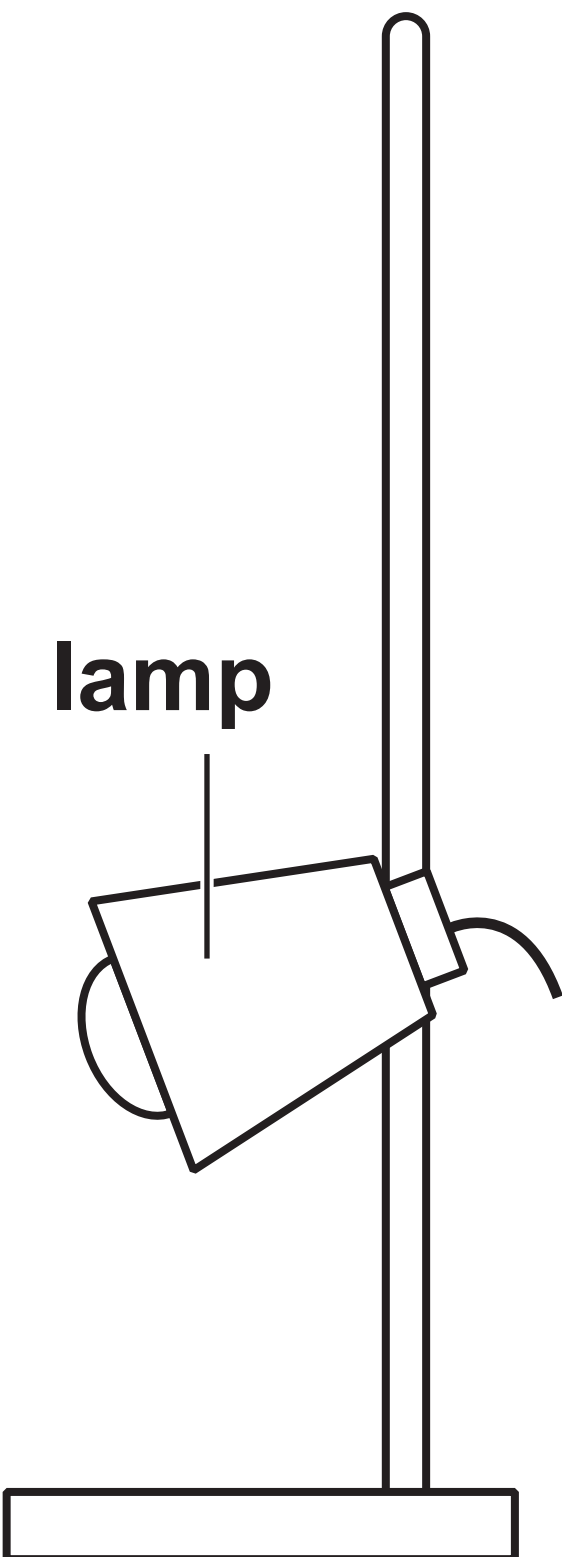
## Question 2(c)(i)

**FIGURE 3**

**metre rule**



**lamp**



**plants in pots**

## Question 3

8

**FIGURE 4**

**oak tree      →      aphids      →      ladybirds      →      robins**

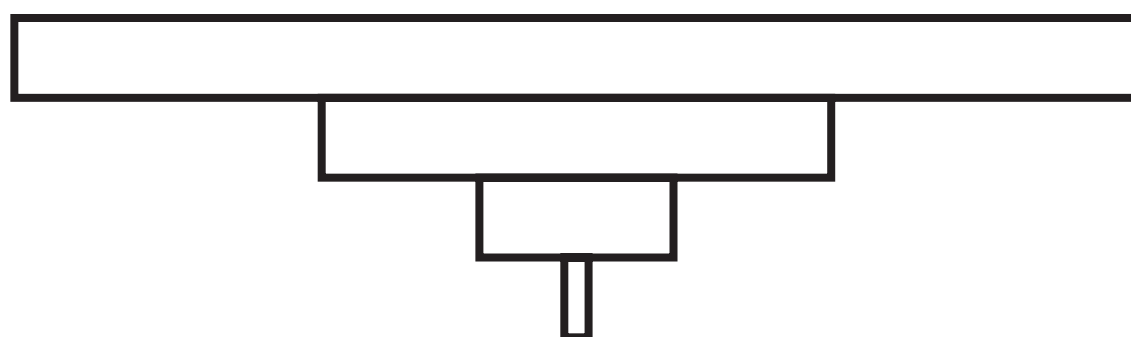


# Question 3(b)

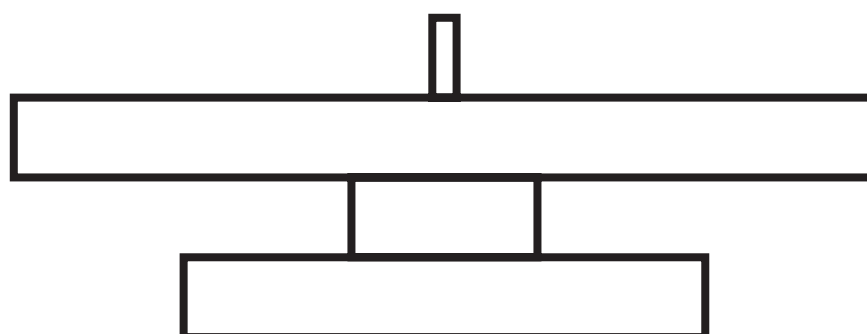
A



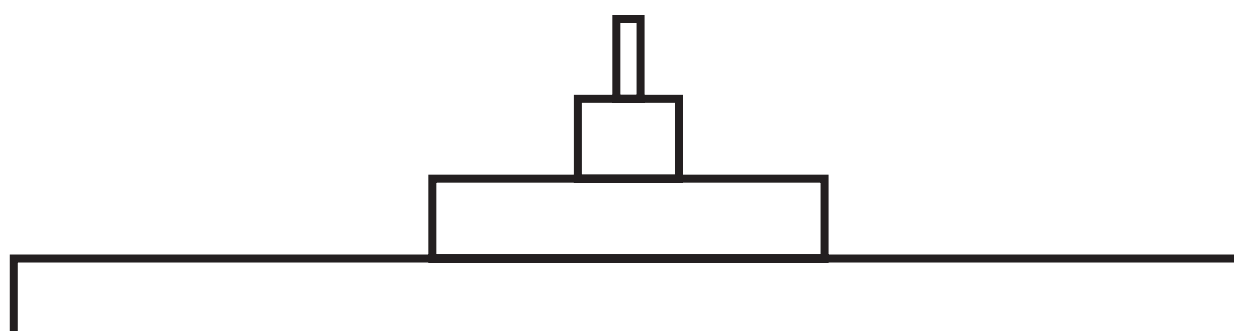
B



C

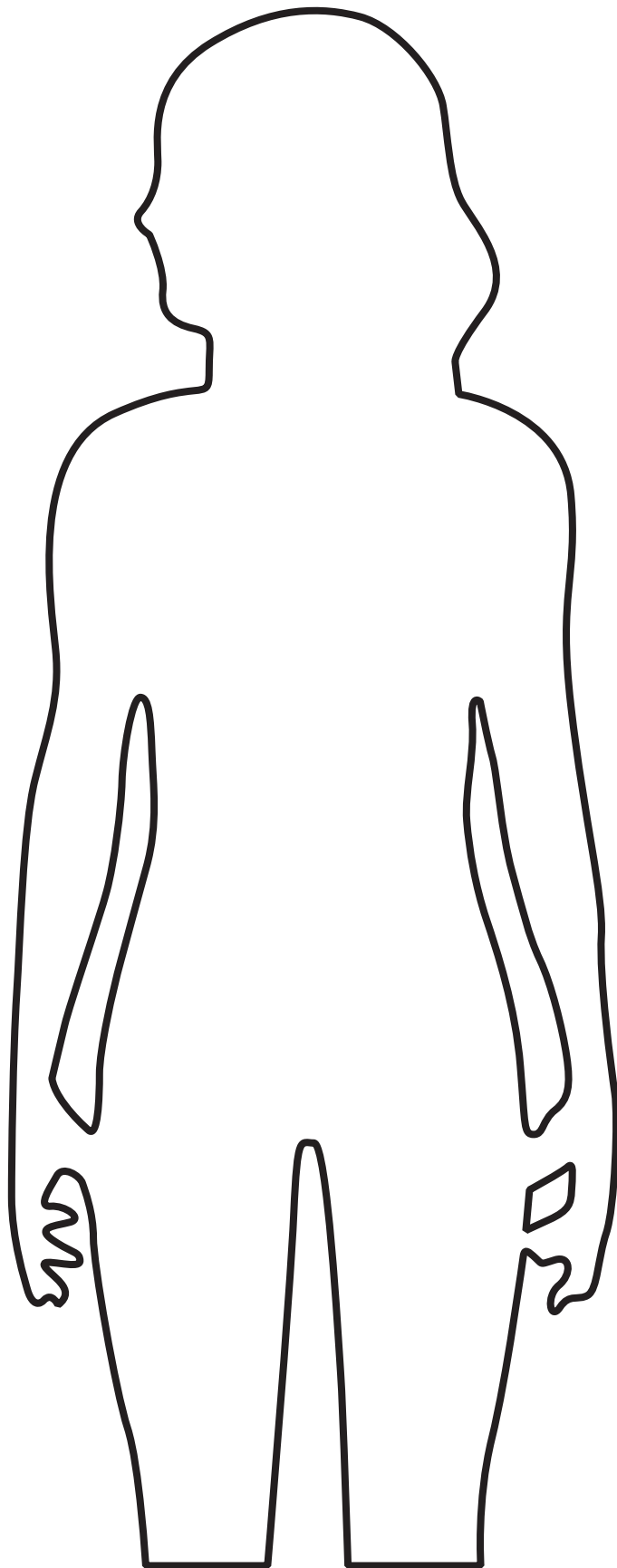


D



## Question 4(a)

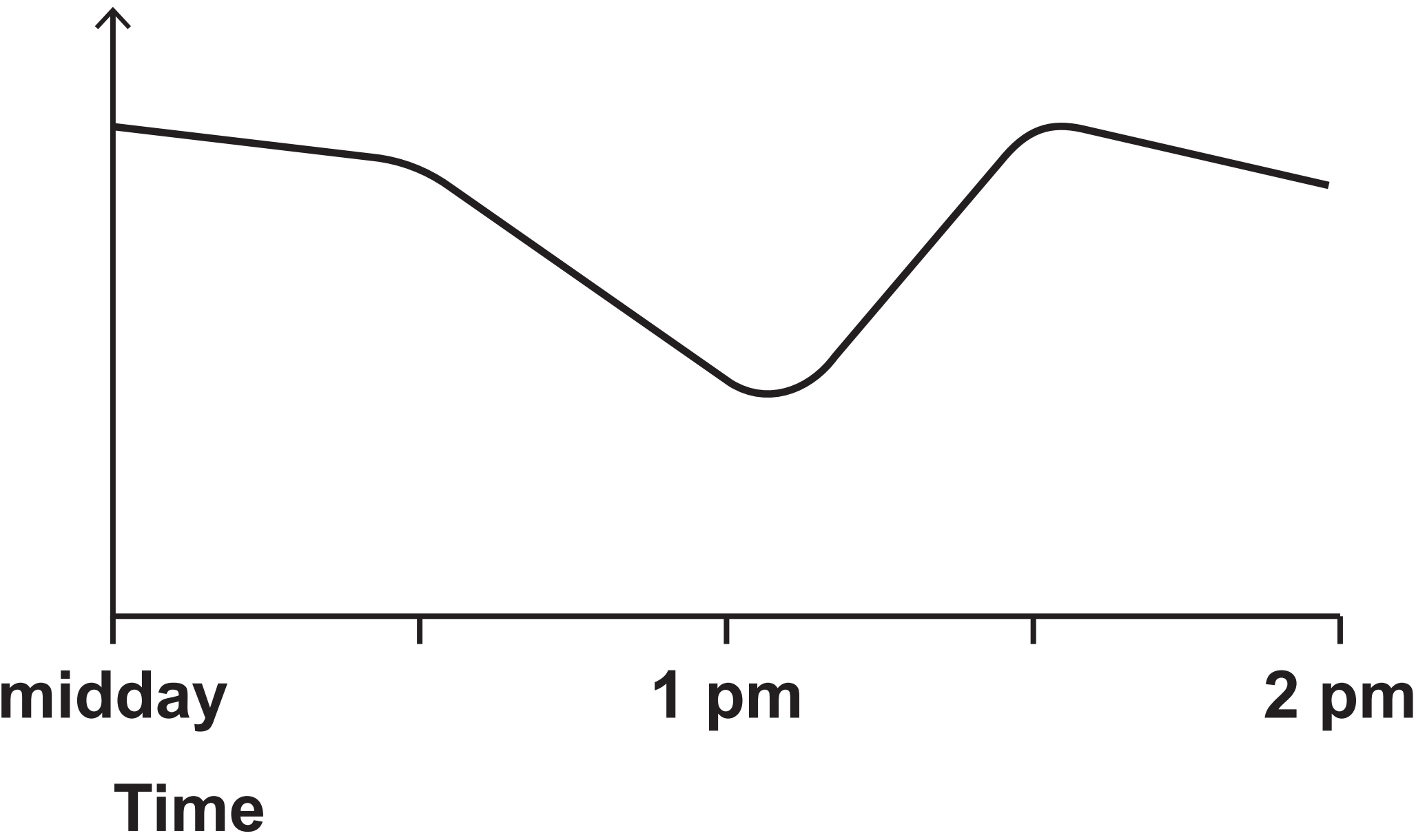
**FIGURE 5**



Question 4(d)

FIGURE 6

Blood glucose concentration in arbitrary units



Question 5

FIGURE 7

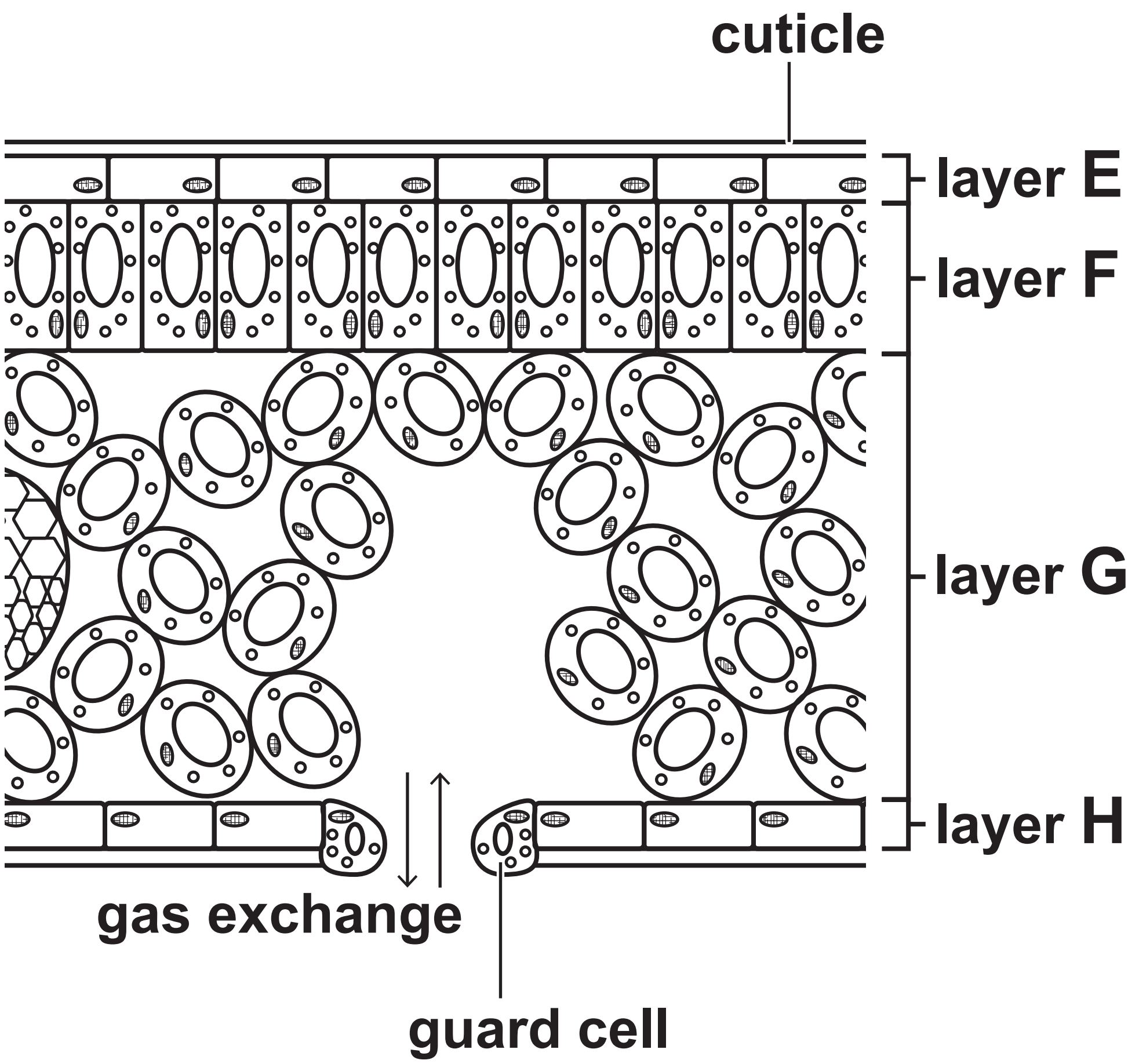


FIGURE 8

water content of soil (%)	thickness of the cuticle in $\mu\text{m}$						mean thickness of cuticle in $\mu\text{m}$
	plant 1	plant 2	plant 3	plant 4	plant 5	plant 6	
5	13·8	12·3	11·4	10·6	11·7	13·2	12·2
10	11·1	8·8	10·0	8·9	7·0	8·2	9·0
15	7·2	7·1	6·9	5·4	5·9	6·1	?
20	3·6	4·0	3·6	4·2	3·9	4·3	3·9

## Question 6

FIGURE 9

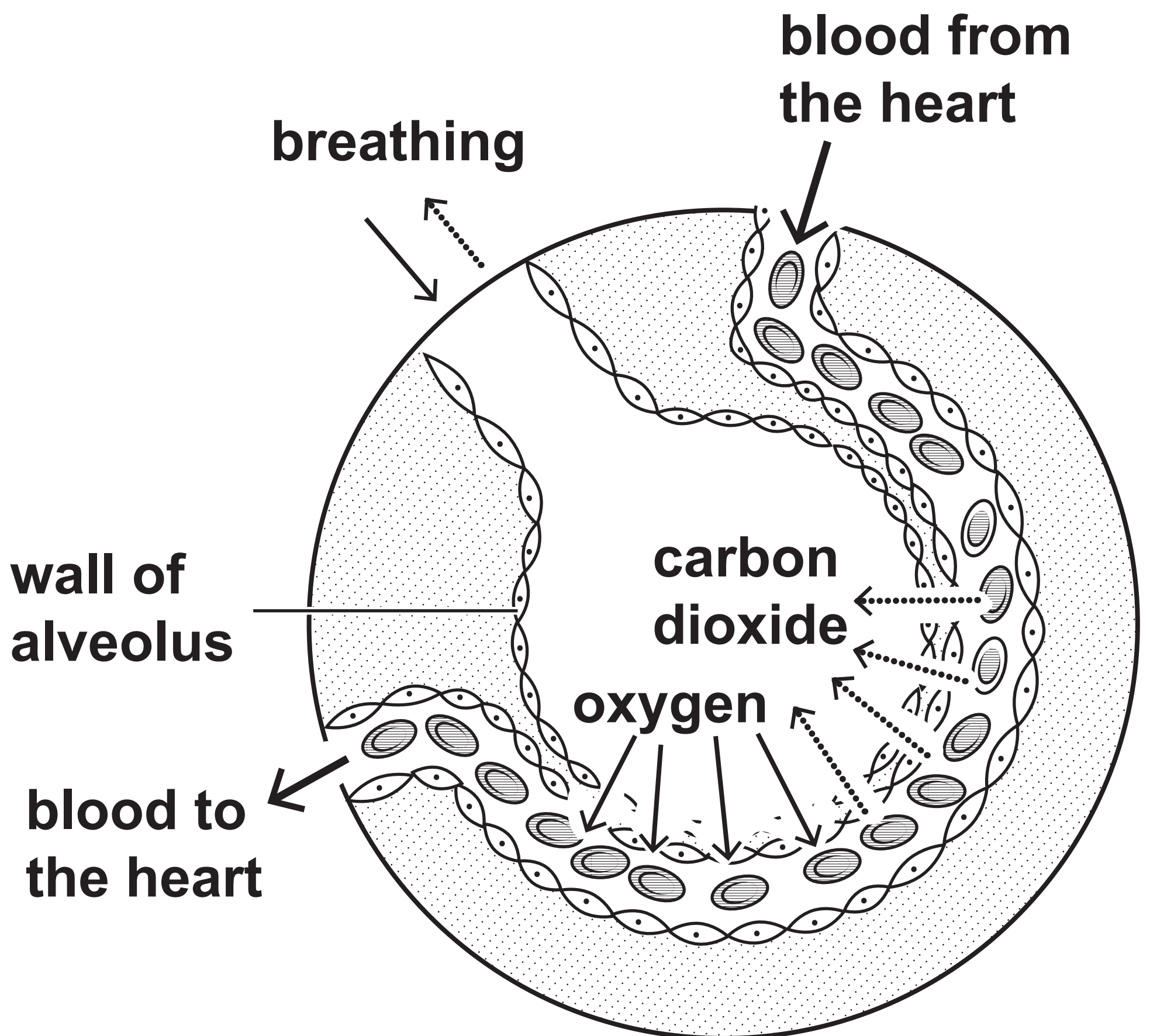


FIGURE 10

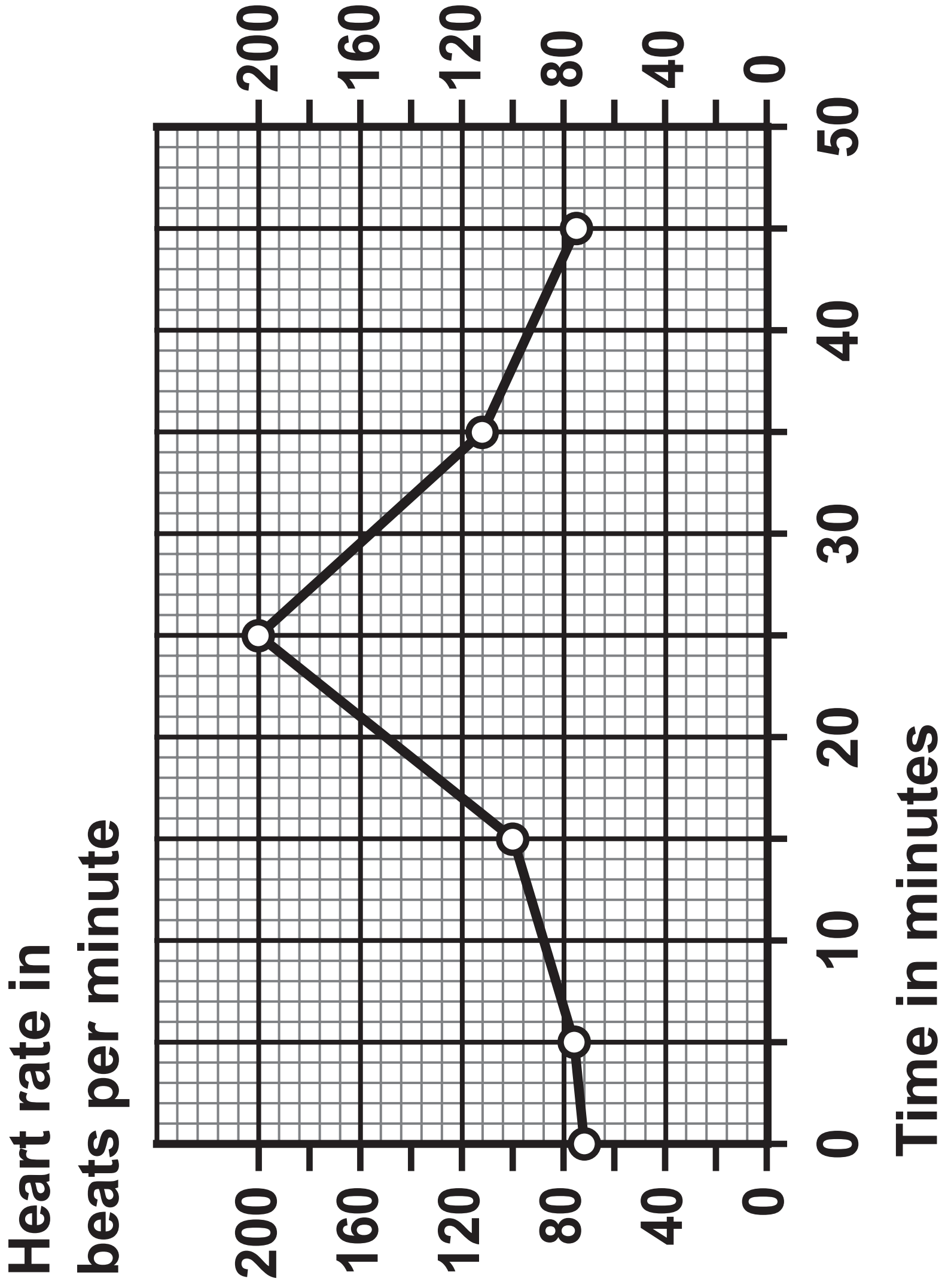
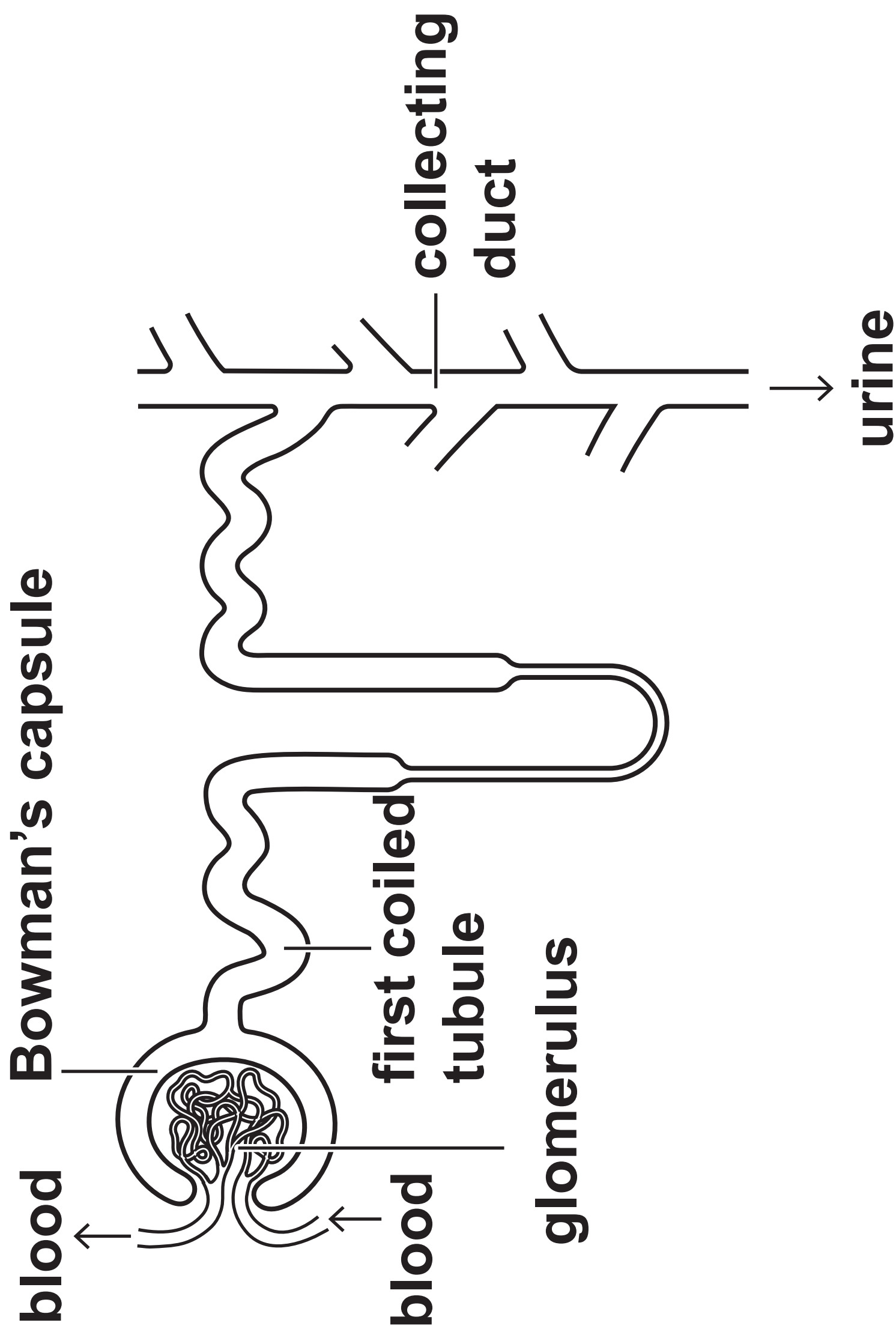


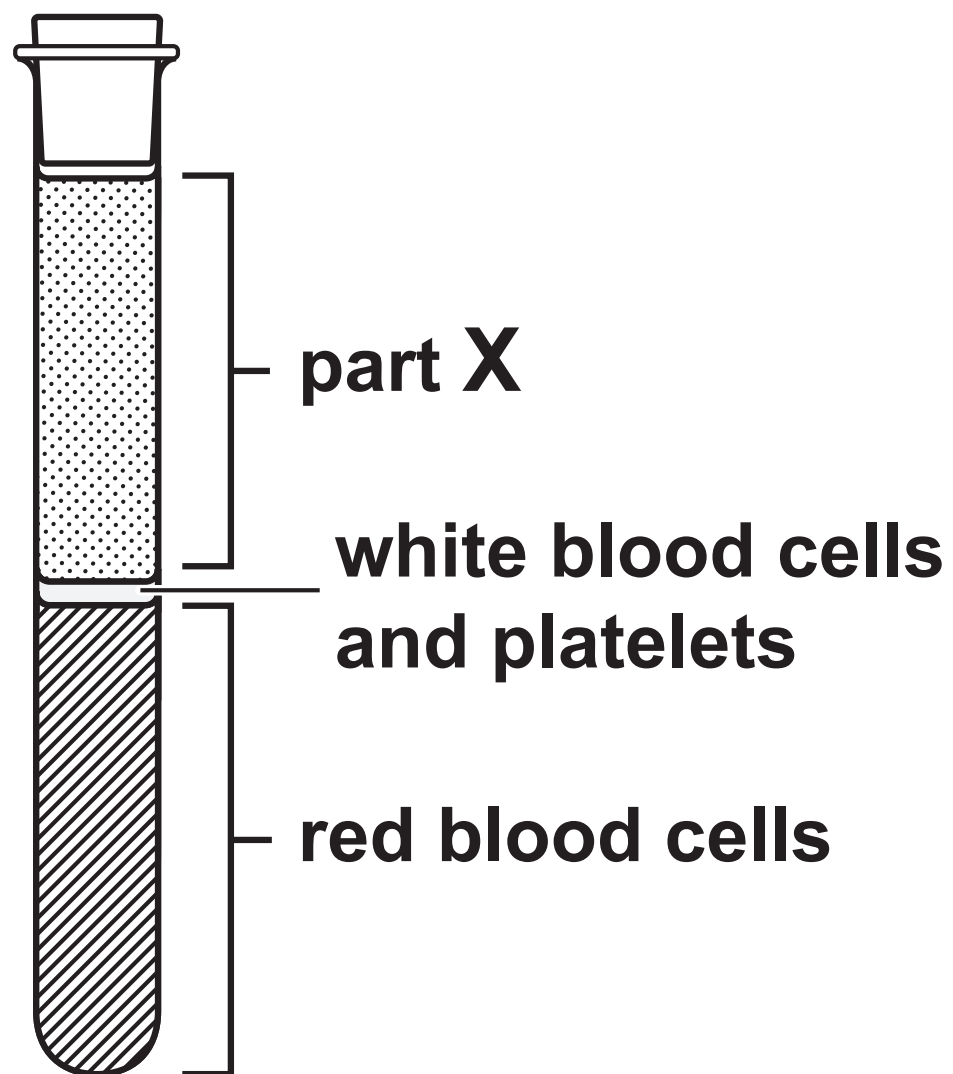
FIGURE 11





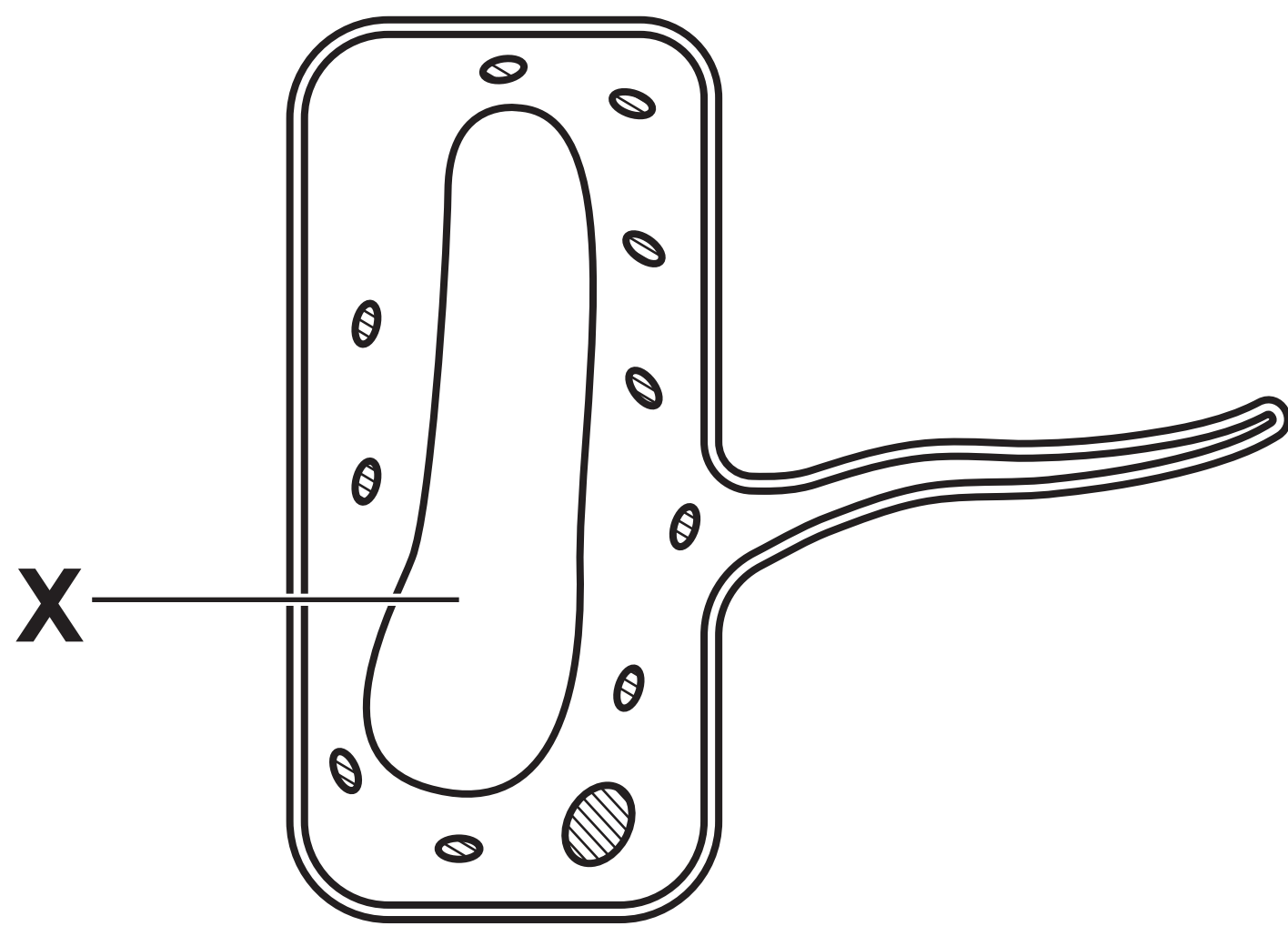
## Question 8(b)

**FIGURE 12**



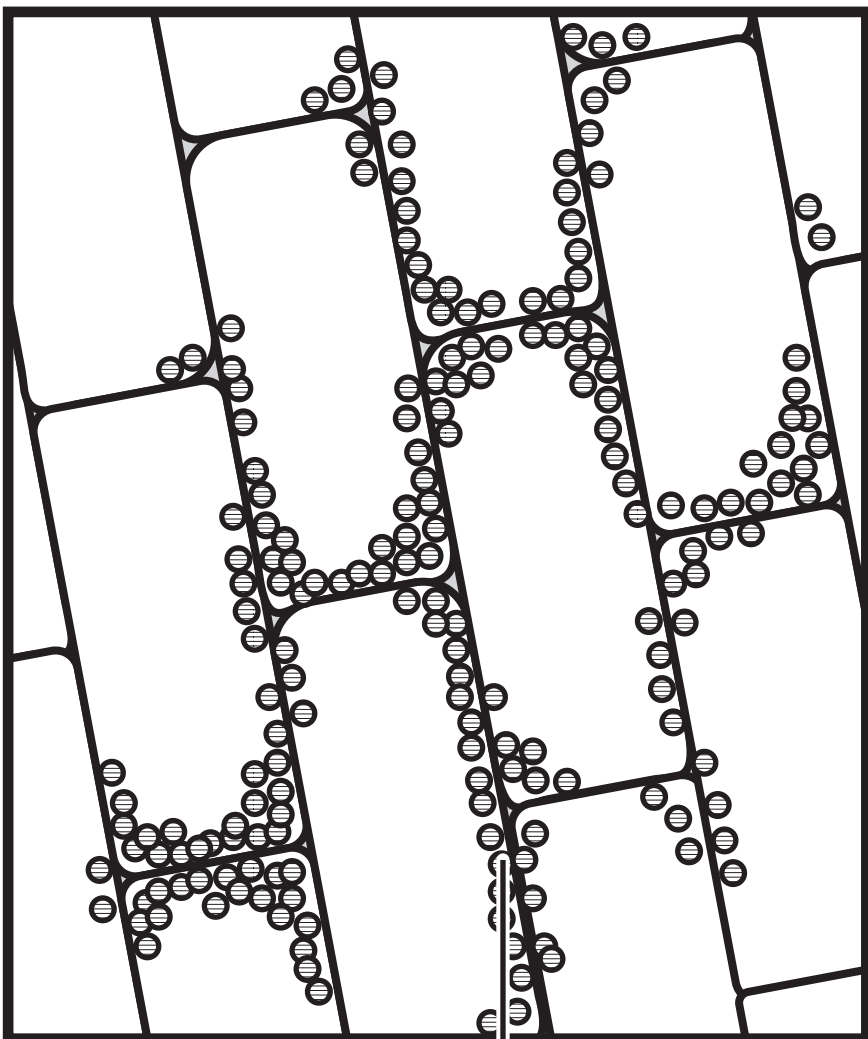
Question 9(a)

FIGURE 13



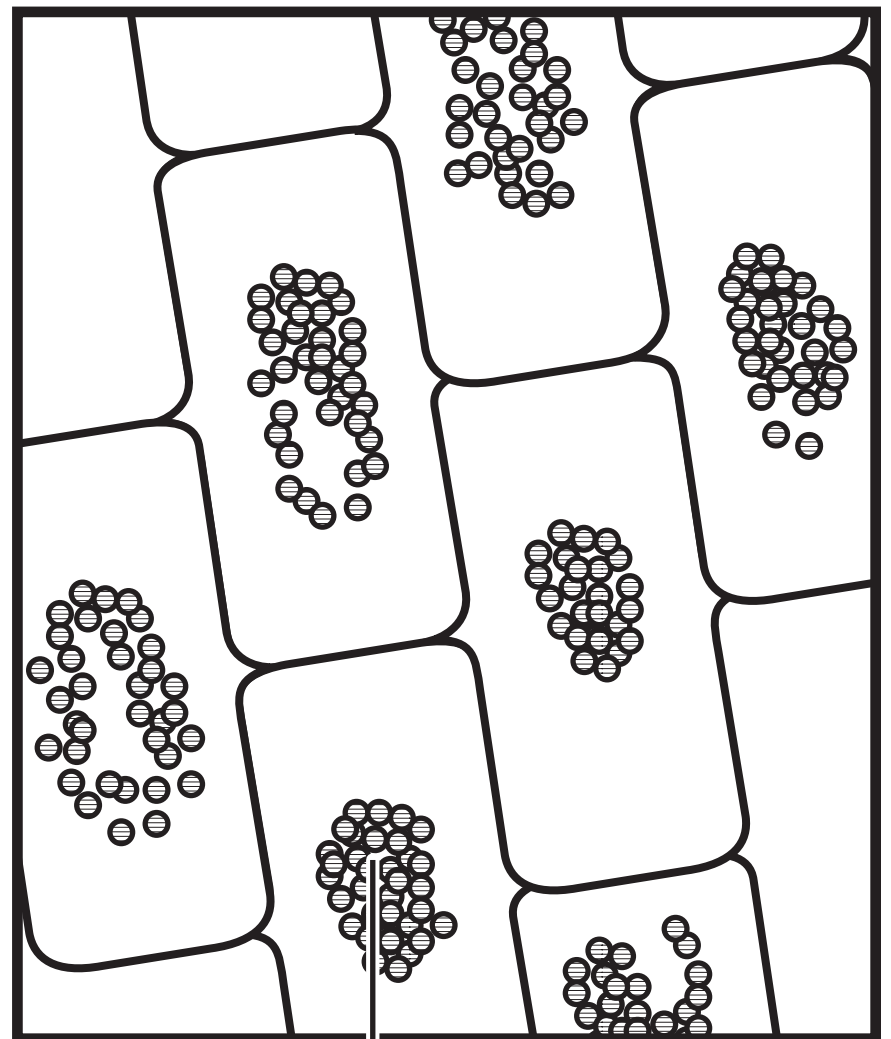
**Question 9(b)****FIGURE 14**

**Elodea cells  
in tap water**



**chloroplasts**

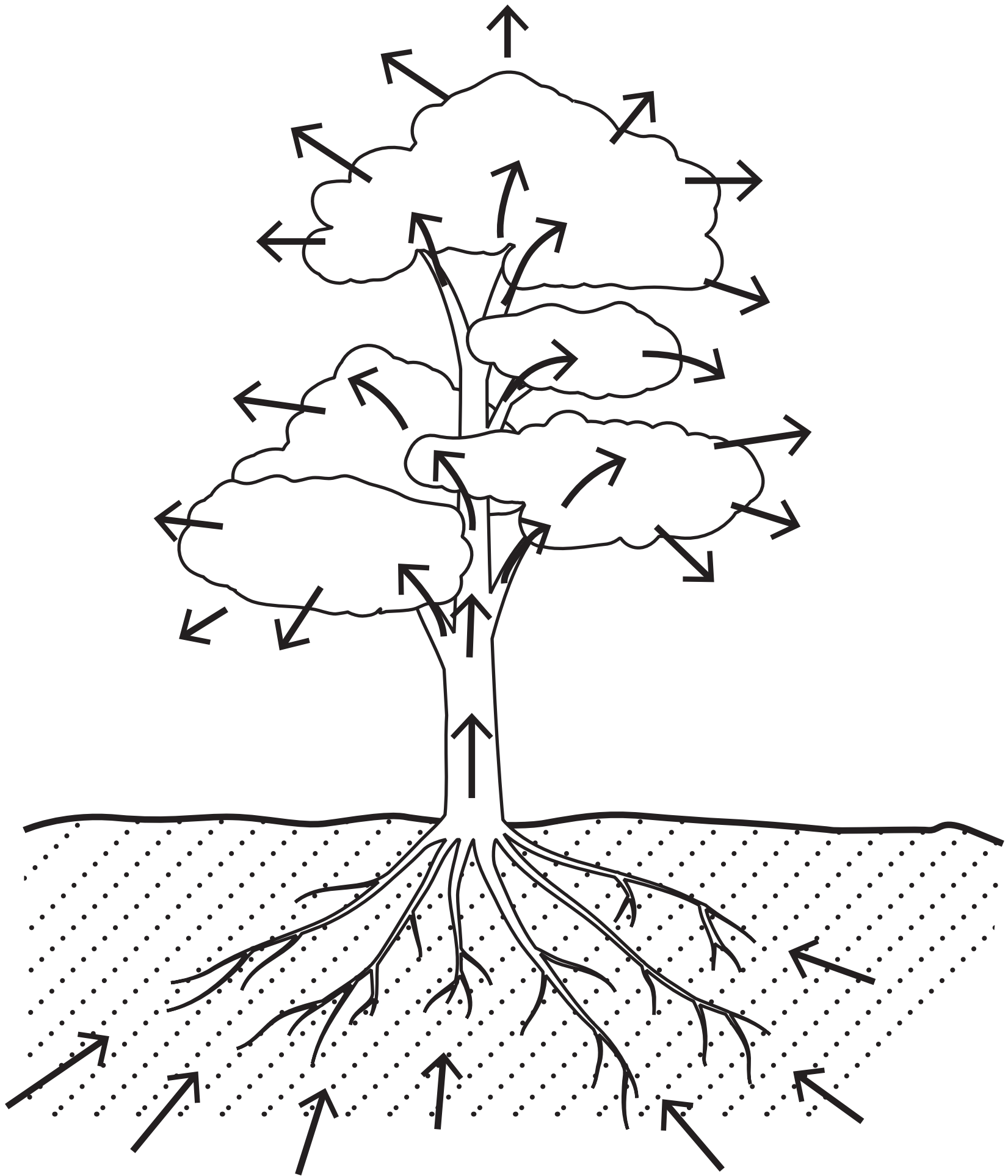
**Elodea cells in  
10% salt solution**



**chloroplasts**

## Question 9(c)

FIGURE 15



Question 10(b)

FIGURE 16

time in days	mass of leaves in grams	
	holly	oak
0	200	200
10	191	181
20	176	154
30	159	122
40	147	96
50	120	70

Question 10(e)

FIGURE 17

	mass in grams	
	at start of month	at end of month
leaves	1 600	400
snails	200	320

## Question 1(a)

**part of  
microscope**

**function**

**part S**

- **to stain the cells**

- **to focus the image  
so that it is clear**

- **to magnify  
the image**

**part T**

- **to hold the slide  
in place**

- **to provide light to  
see the image**

## Question 4(a)

**FIGURE 5**

